

Karen

The warmth of our collection

I have a nurturing warmth and eagerly foster moments of togetherness for families. With a knack for organization, I stand ready to ground any environment, creating harmony in every corner of the home. Overflowing with love and devotion, I cherish the comfort delivered in a cozy home.

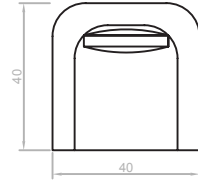
The **Karen Chair** exudes unique charm with its gracefully curved arms and sleek design features. Its box band back cushion offers both support and modern elegance, while the tight seat adds to its refined appearance. Enhanced by inset legs, this chair presents a subtle yet striking detail that elevates its overall aesthetic. Whether placed in a contemporary living room or a refined study, the **Karen Chair radiates sophistication and style, making it a standout addition to any interior space.**



KAREN COLLECTION

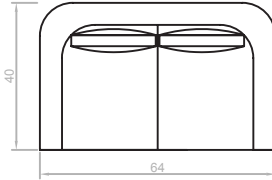
Karen Chair:
10 yards or 110 sq. ft

36" h x 40" L x 40" d



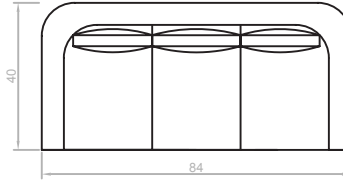
Karen Loveseat:
18 yards

36" h x 64" L x 40" d



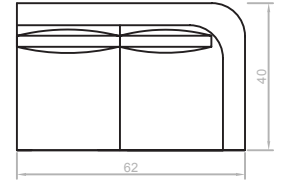
Karen Sofa:
20 yards

36" h x 84" L x 40" d



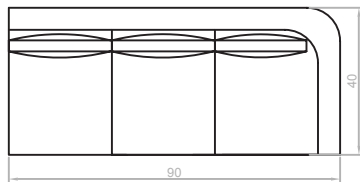
Karen 2 Seat:
16 yards

36" h x 62" L x 40" d



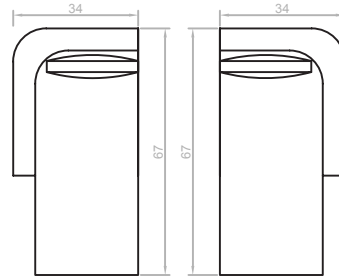
Karen 3 Seat:
18 yards

36" h x 90" L x 40" d



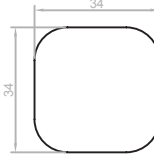
Karen Chaise:
15 yards

36" h x 67" L x 34" d



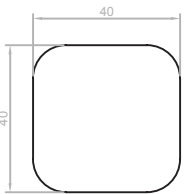
Karen Ottoman:
3 yards

34x34



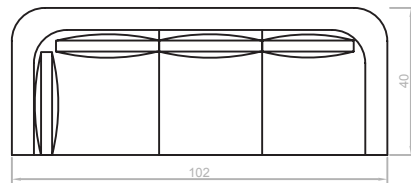
Karen Ottoman:
4 yards

40x40



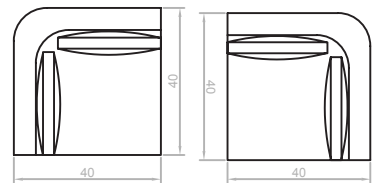
Karen 3 Seat with Corner:
20 yards

36" h x 102" L x 40" d



Karen Corner:
9 yards

36" h x 40" L x 36" d



CUSTOMIZATION & FEATURES

Stitch Types

- Knife Edge (Std.) Top Stitch (NC.) Double Top Stitch (NC.)

Bases

- Inset Legs (Std.) Swivel Base (UC.)

Seat Cushion

- Tight Seat Medium (Std.) Tight Seat Soft (NC.) Tight Seat Firm (NC.)

Back Cushion

- Full Feather (NC.) Feather Wrapped Foam Soft (NC.) Feather Wrapped Foam Medium (Std.)
 Poly Fill (NC.) Feather Wrapped Foam Firm (NC.)

Customizations

- Fabric Protection (AC.) Add Poly Filled Toss Pillow(s) (AC.) Add Feather Toss Pillow(s) (AC.)
- | | | | |
|--------------|------------|--------------|------------|
| 18" x 18" | QTY: _____ | 18" x 18" | QTY: _____ |
| 20" x 20" | QTY: _____ | 20" x 20" | QTY: _____ |
| 22" x 22" | QTY: _____ | 22" x 22" | QTY: _____ |
| Other: _____ | QTY: _____ | Other: _____ | QTY: _____ |

*NC - No Charge
*Std. - Standard
*AC - Additional Charge